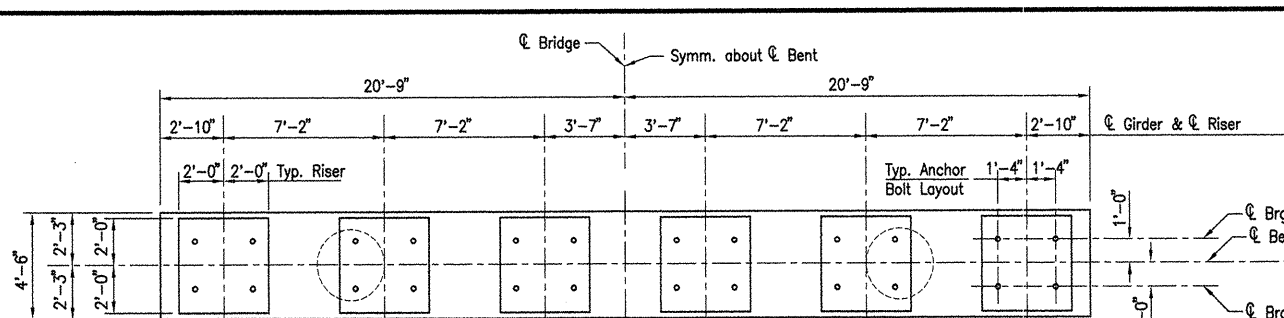


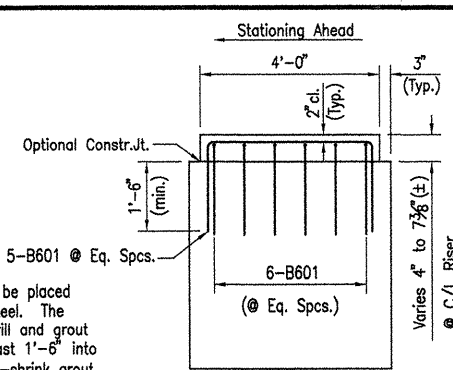
COMPANY\1999 JOBS\99-044 AHTD\WHITERIVER\JOB 110395\DRW\20-44A11 ACAD SCALE: 1/4"=1'-0"



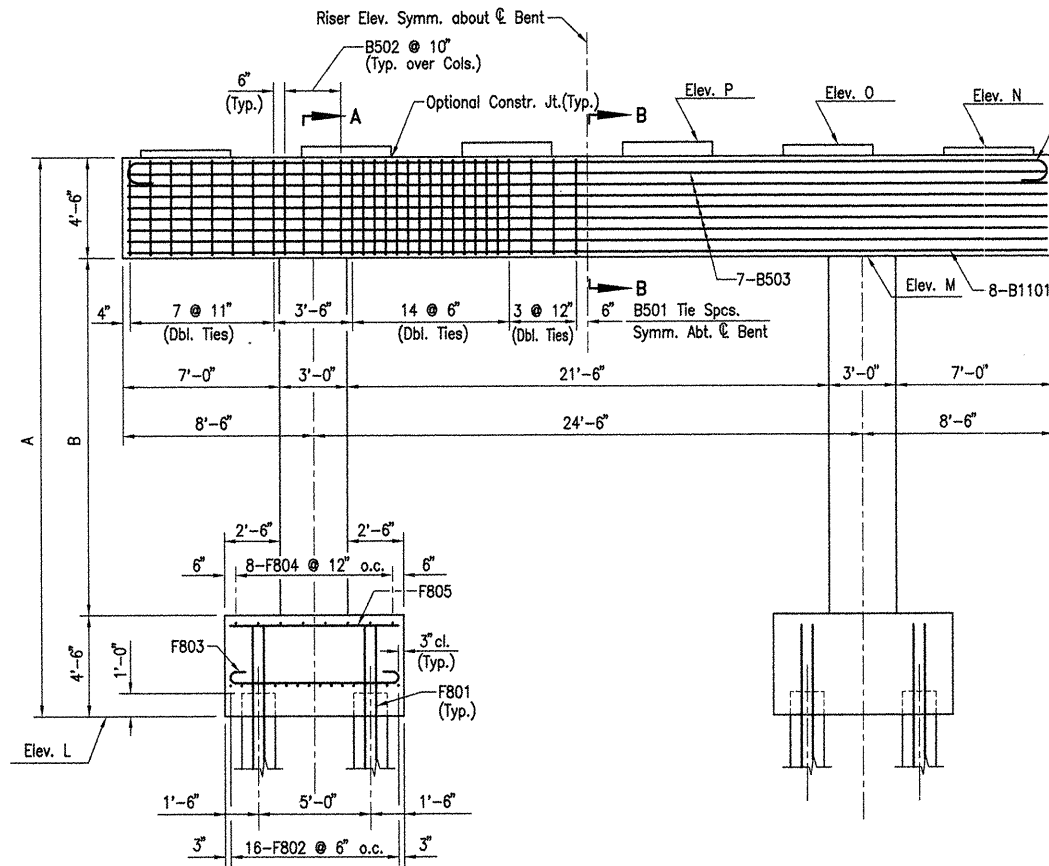
PLAN
Scale: 1/4" = 1'-0"

Note:
For details of Elastomeric Bearings,
see Dwg. No. 47100

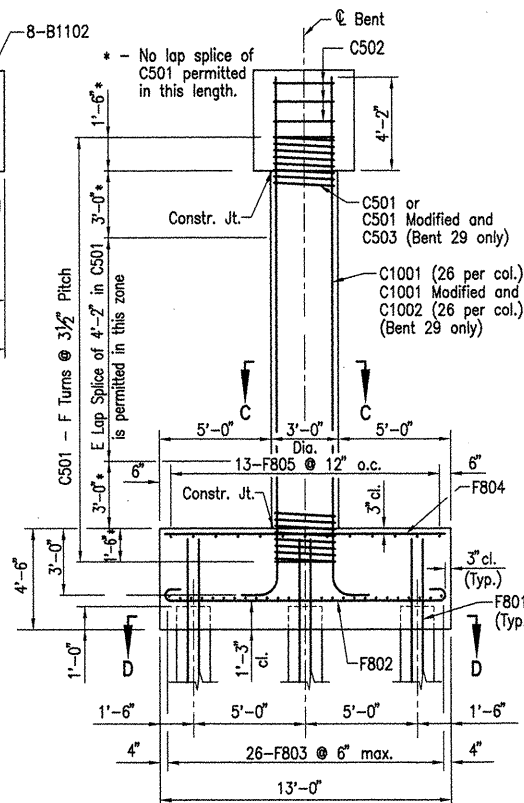
The riser reinforcing steel shall be placed with the bent cap reinforcing steel. The Contractor has the option to drill and grout the riser reinforcing steel at least 1'-6" into the cap using an approved non-shrink grout or an epoxy grout listed in the QPL. Diameter of holes and installation procedure shall be as recommended by the grout manufacturer. Place bent reinforcing properly to avoid damage. This work shall be paid under "Reinforcing Steel - Bridge".



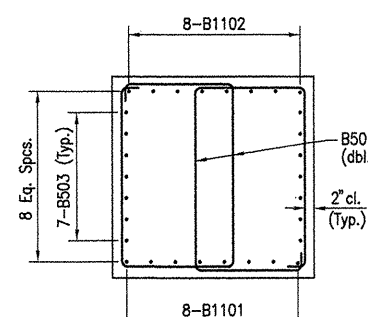
RISER DETAIL
Scale: 1/2" = 1'-0"



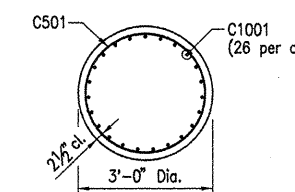
ELEVATION
Scale: 1/4" = 1'-0"
Looking Forward



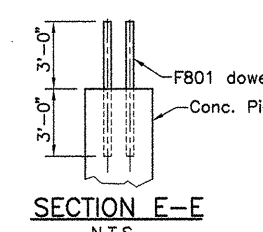
SECTION A-A
Scale: 1/4" = 1'-0"



SECTION B-B
Scale: 1/2" = 1'-0"



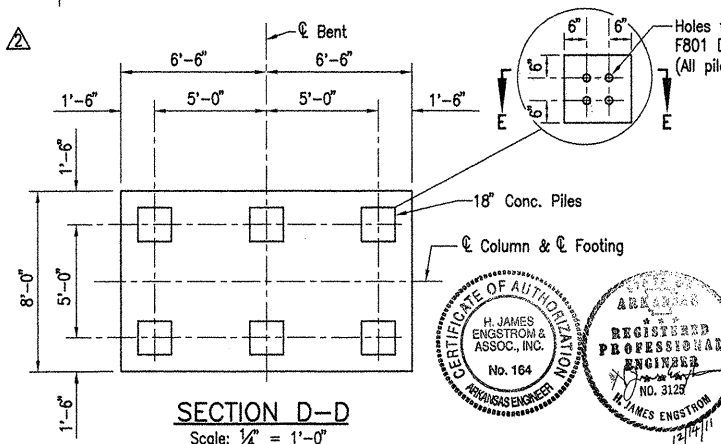
SECTION C-C
Scale: 1/2" = 1'-0"



SECTION E-E
N.T.S.

Drill and grout F801 dowels 3'-0" into piles using an approved non-shrink grout or an epoxy grout listed on the QPL. Diameter of holes and installation procedure shall be as recommended by the grout manufacturer.

- Revised 'Table of Variables' at Bent 29, 'Bar List', 'Section A-A' and 'Notes' by HJE/MM
GPT- 12-14-11
- Revised 'Table of Variables' by HJE/MM
GPT- 11-1-10



SECTION D-D
Scale: 1/4" = 1'-0"

DATE REVISION	DATE FILMED	DATE REVISION	DATE FILMED	FED. ROAD NO.	STATE	FED. AID PROJ. NO.	SHEET NO.	TOTAL SHEETS
12-14-11					ARK.			
11-1-10								
				JOB NO.		110395	35	203
				06830		BENTS		47033

BAR LIST-PER BENT

Mark	No. Req'd	Length	'A'	'B'	P.D.	Bending Diagrams
B501	104	14'-0"	2'-7"	4'-2"	2 1/2"	Dimensions are out to out of bars.
B502	8	12'-3 1/2"	4'-2"	4'-2"	2 1/2"	
B503	14	41'-2"			Str.	
B601	66	7'-4"	3'-8"	2'-0"	4 1/2"	
B1101	8	41'-2"			Str.	
B1102	8	44'-2"	41'-2"	1'-0 1/2"	11 1/4"	
C501	2	G				
C502	6	9'-6"				
C503	2	254'-9"				
C1001	52	C	D	1'-10"	9"	
C1002	52	14'-10"				
F801	48	6'-0"			Str.	
F802	32	14'-4"	12'-6"	8"	6"	
F803	52	9'-4"	7'-6"	8"	6"	
F804	16	12'-6"			Str.	
F805	26	7'-6"			Str.	

NOTES:

- All concrete shall be Class "S". All exposed corners to be chamfered 3/4" unless otherwise noted. All concrete shall be poured in the dry.
- All reinforcing steel shall conform to AASHTO M31 or M53, Gr.60.
- If anchor bolts are drilled into cap, top reinforcing bars shall be properly placed to avoid damage.
- For additional information, see Layout.
- At Bent 29 only C501 and C1001 Bars shall be modified by cutting such that the extension above top of footing is 10'-8". C501 and C1001 shall be lap spliced using C503 and C1002 bars, respectively. Minimum lap length for C1001 is 7'-4".

NOTES FOR SPIRAL REINFORCING

- Ends of spirals in footing and cap shall have 1 1/2 turns and terminate with a 135° hook and a 24" tail as shown in Bar List.
- Spiral reinforcement at splices of bars in the length designated as permissible for lap splices shall be terminated by a 135° hook with a 10" tail hooked around a vertical bar.
- Spiral reinforcement shall be plain round or deformed steel bars meeting the requirements of AASHTO M31 or M53 (Grade 60) or shall be cold drawn wire meeting the requirements of AASHTO M32 or M225 (Grade 70) with a minimum diameter of 0.625".
- Spiral reinforcement shall be paid for at the contract unit price bid per pound for "Reinforcing Steel - Bridge (Grade 60)". No additional payment shall be made for spacers, splices or bracing needed for assembly, shipping, handling or erecting.
- Lapped splices in spirals shall be lapped 80 bar diameters minimum.
- Adjust spiral pitch as needed to accommodate footing or cap bars.

ALTERNATE NO. 1

DETAILS OF BENTS - WHITE RIVER
BENTS 20 - 44

WHITE RIVER STR. & APPRS.
(CLARENDON) (PH III) (F)
MONROE COUNTY

ROUTE 79 SEC. 13

ARKANSAS STATE HIGHWAY COMMISSION
LITTLE ROCK, ARK.

Engstrom & Modjeski and Masters, Inc.

DRAWN BY: CJA/JDB DATE: Sep. 10 FILENAME: b1103951_b02
CHECKED BY: FS DATE: Nov. 01 SCALE: 1/4"=1'-0"
DESIGNED BY: BMH DATE: Nov. 01
BRIDGE NO. 06830 DRAWING NO. 47033